



# Community Initiatives to Develop an Interactive Navigational Map of the West Branch Susquehanna River from Renovo to Love Run, PA

Bethany Shaffer, Cody Wheeler, and Md. Khalequzzaman  
Dept. of Geology & Physics, Water and Soil Resources Lab, Lock Haven University



## ABSTRACT:

The West Branch Susquehanna River (WBSR) is a defining ecological and geological feature in the heartland of Pennsylvania. Lock Haven, which is located on the bank of the WBSR, was designated as a "River Town" in July 2014 by the Susquehanna Greenway Partnership with a goal to connect the visitors and community to the river, as well as to connect Lock Haven to the larger Susquehanna Greenway system and the Pennsylvania Wilds Initiatives. River-related tourism remains an important element to the economy and heritage of the central Pennsylvania region. Prior to this project, there was a lack of navigational resources that are essential for safe and enjoyable recreational experiences for boaters and outdoor enthusiasts. With funding provided by the Susquehanna Greenway Partnership, Clinton County Commissioners' Office, and Anadarko Petroleum Corporation; Lock Haven University's Water and Soil Resources Lab developed physical and interactive navigational maps that span from Renovo to Love Run, Clinton County, PA.

## METHODS:

- The maps cover 36 river-miles, illustrating features that include water depths, public access points, parks, historic landmarks, and community resources.
- Georeferenced sounding data were analyzed using the IDW method in ArcGIS software.
- The prepared maps and images were uploaded onto the ESRI online server to make them available as interactive navigational resources.
- Inputs from the community stakeholders were incorporated throughout all phases of this project.

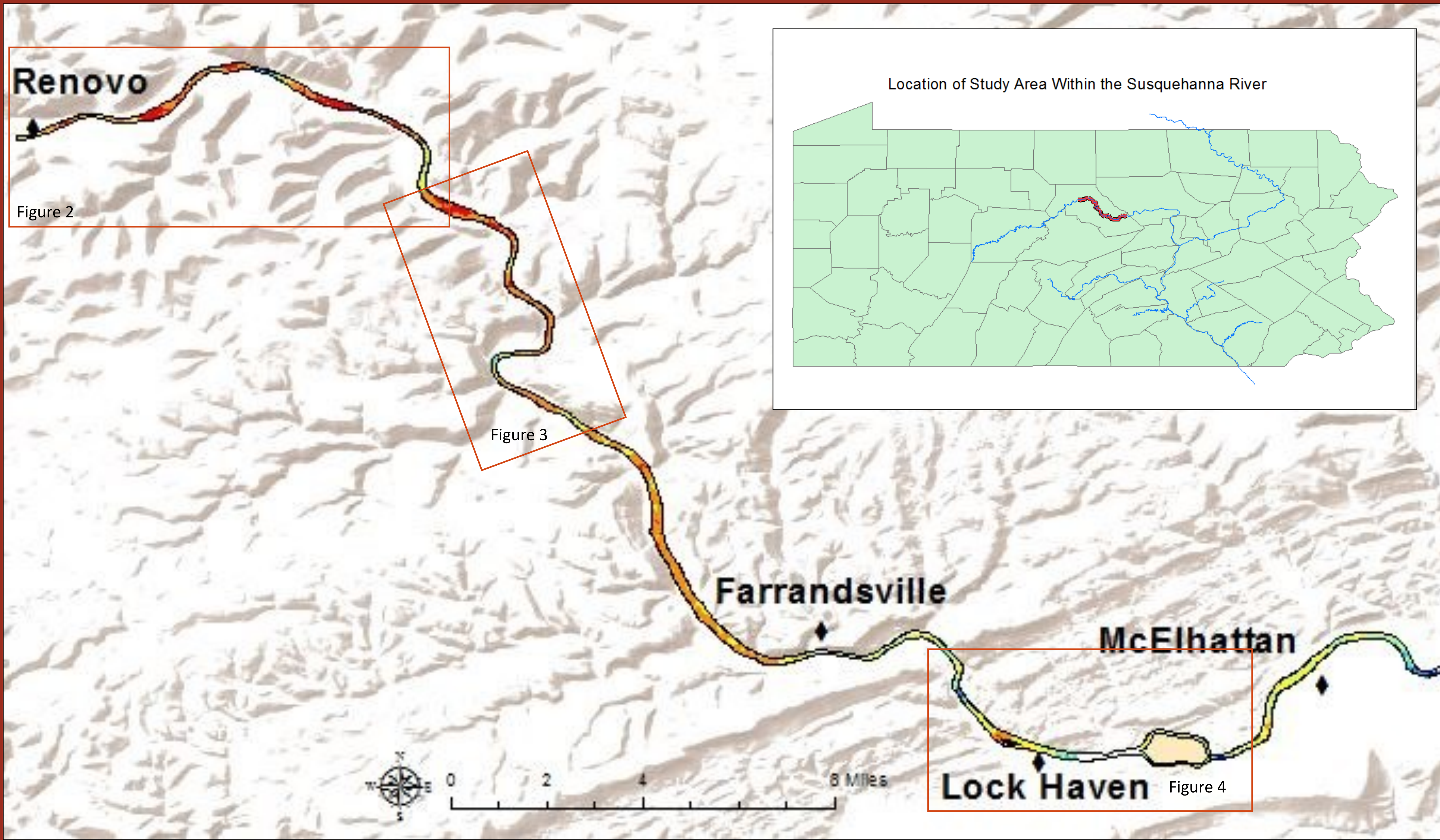


Figure 1: Extent of study area from Renovo to Love Run, Wayne Township, PA

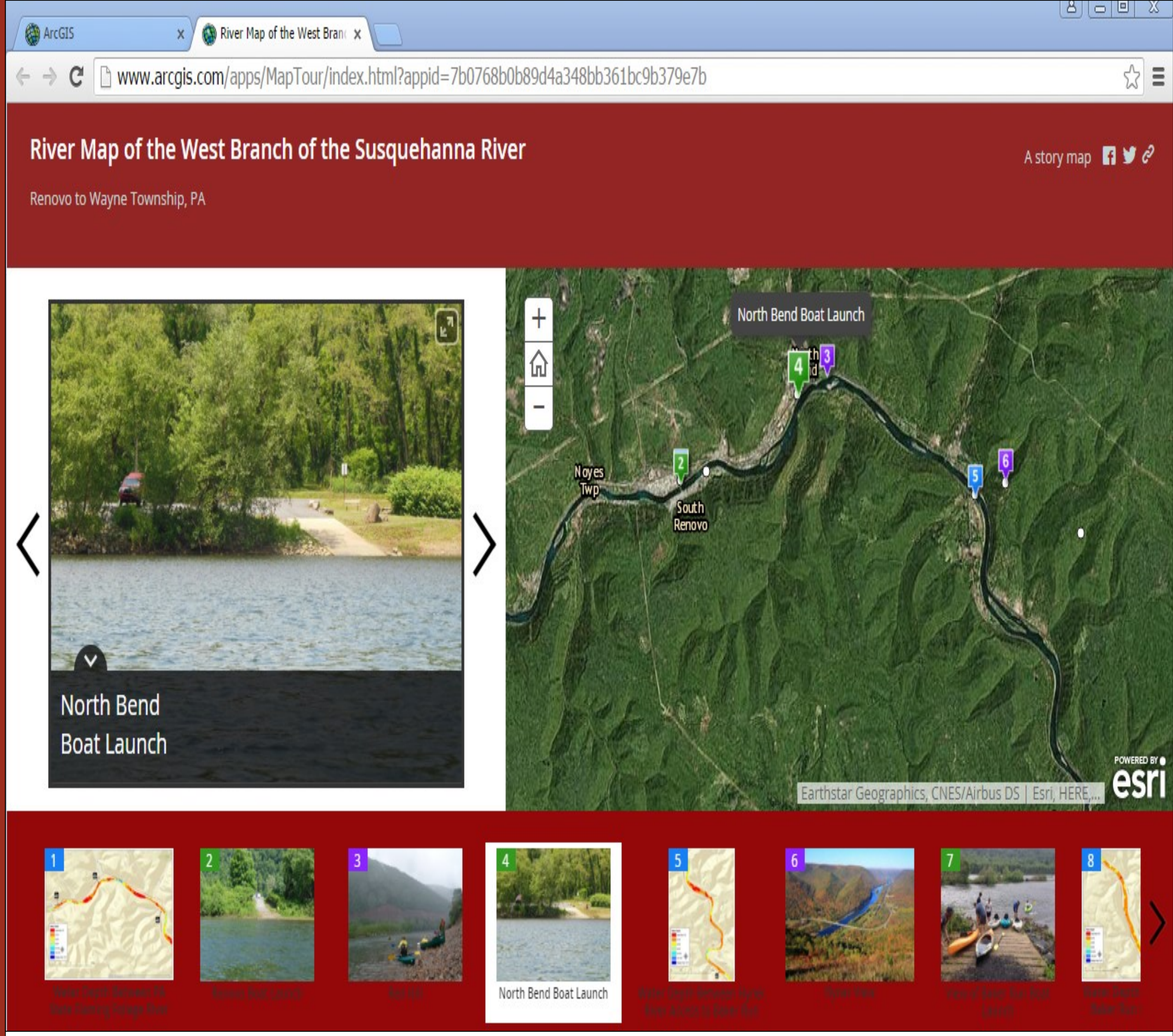


Figure 5: Sample of the Online Interactive Map using ArcGIS Online

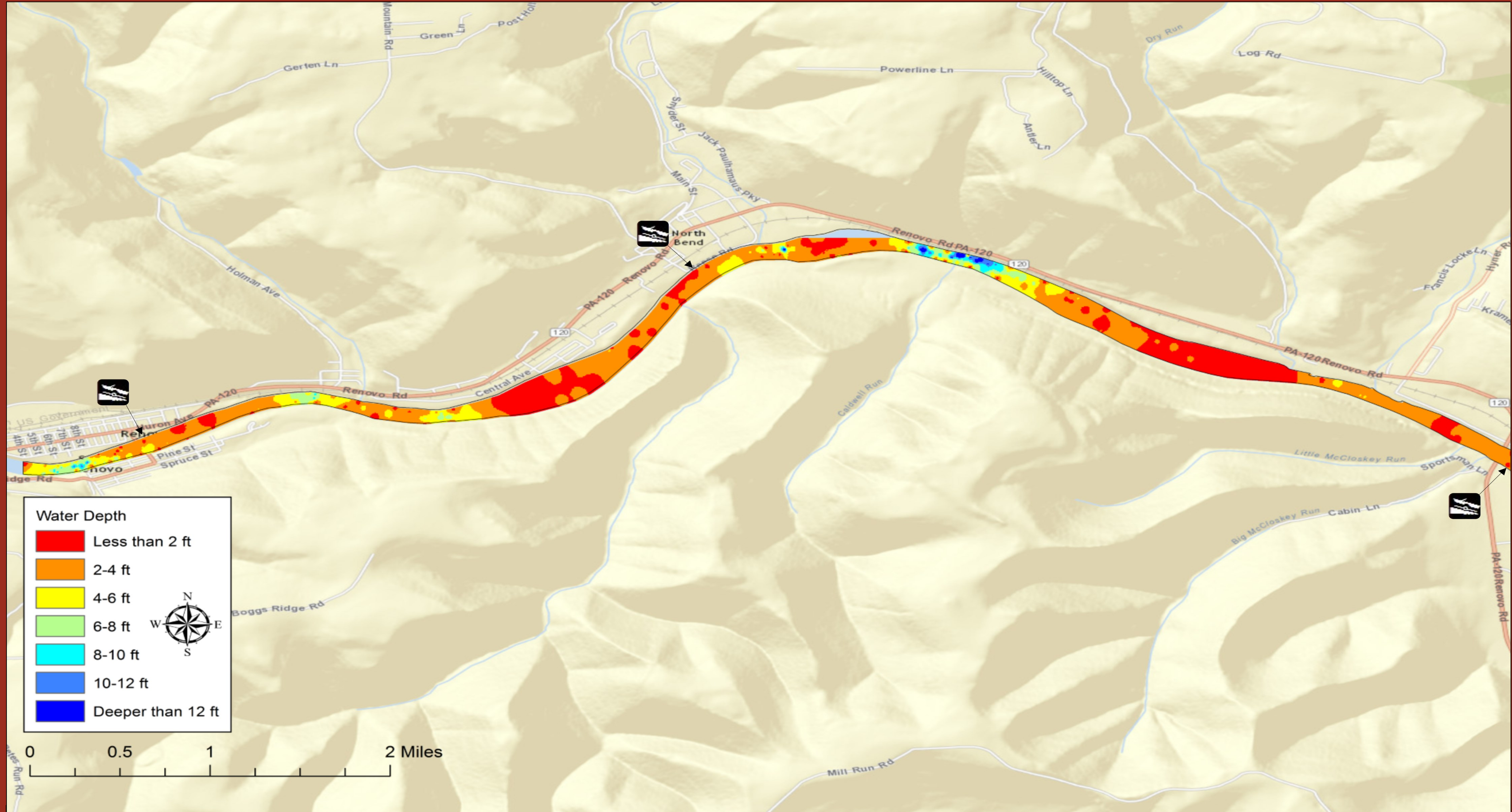


Figure 2: Navigational Map Near Renovo, PA

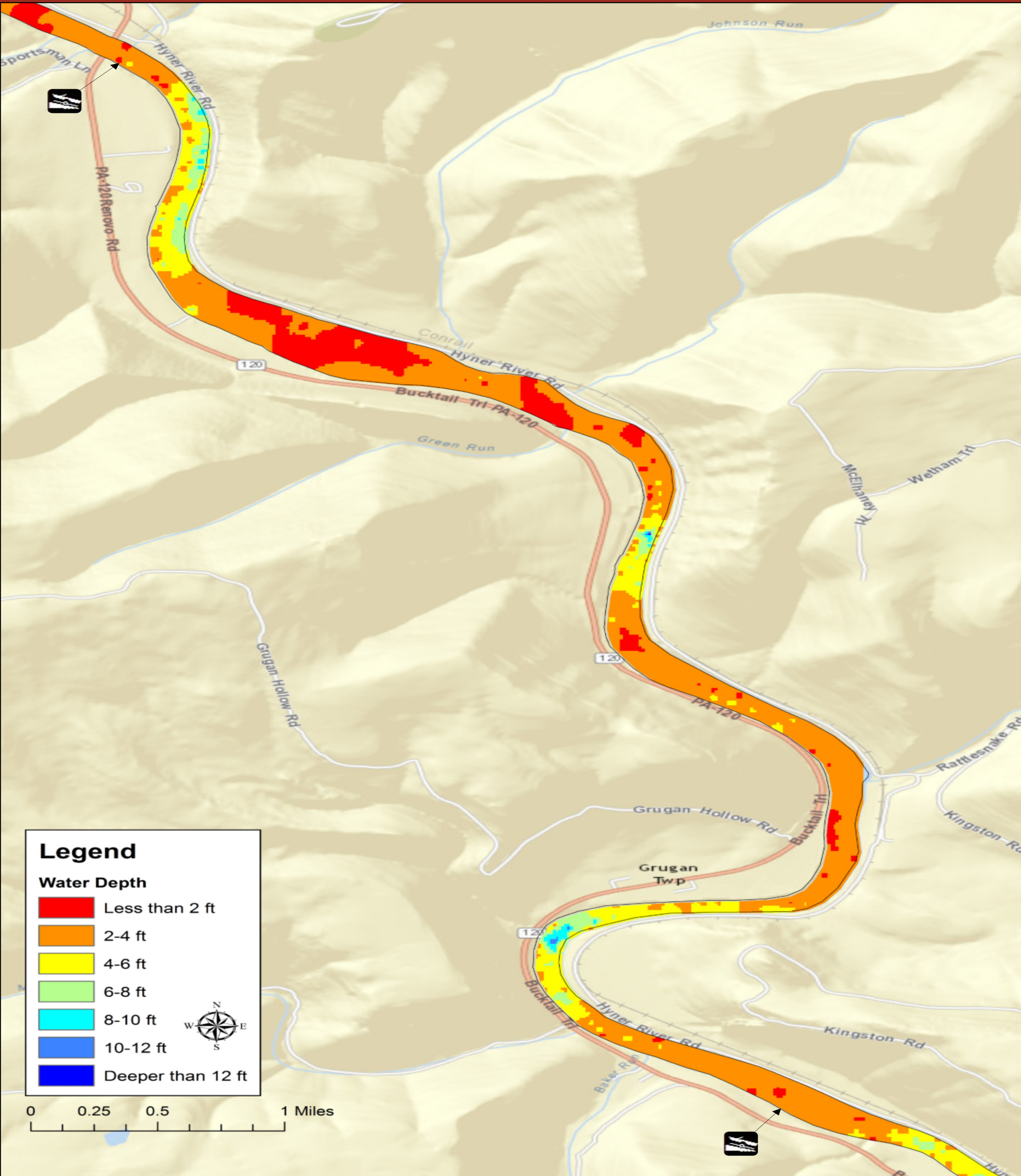


Figure 3: Navigational Map Near Hyner View State Park to Baker Run

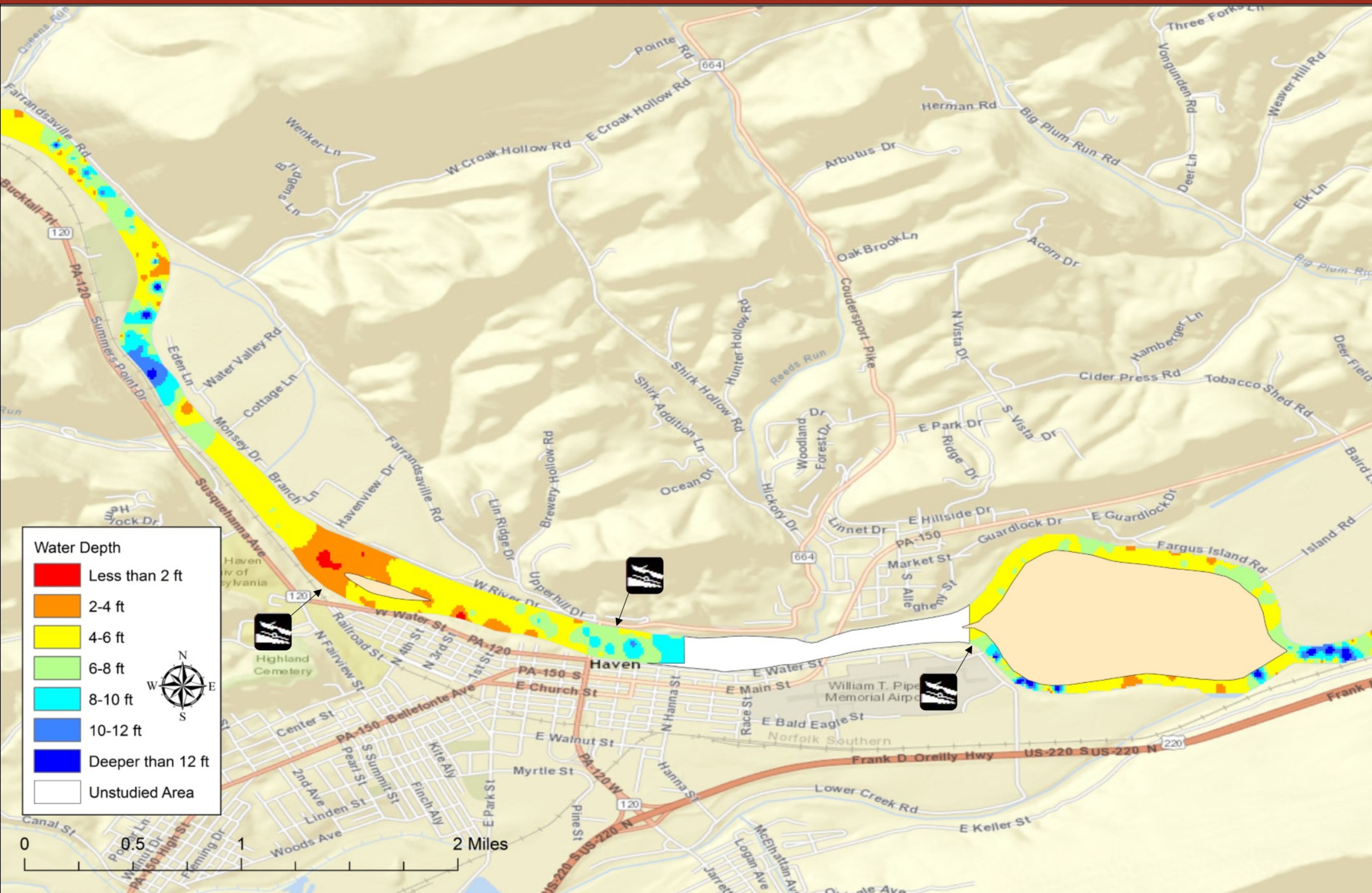


Figure 4: Navigational Map Near Lock Haven, PA